



# SA FIRE & SAFETY SUPPLIES

1

SA FIRE

## PRETORIA HEAD OFFICE

791 Steve Biko Road

Wonderboom South

Pretoria

[www.safiresupplies.co.za](http://www.safiresupplies.co.za)

## BRANCHES:

- Hermanstad, Pretoria West – Johannesburg – Bela Bela

## CONTACT DEATAILS:

- 087 654 4339 (Office) 012 111 0773 (Office)

- 074 632 4088 (Mobile number)

- [sales@safiresupplies.co.za](mailto:sales@safiresupplies.co.za)

- [info@safiresupplies.co.za](mailto:info@safiresupplies.co.za)

- [pta@safiresupplies.co.za](mailto:pta@safiresupplies.co.za)

## ABOUT US:

SA Fire was established in 2020, to serve and protect public and enterprises in order to secure their fire safety needs. Our goal is to get all our customers compliant with SANS (South African National Standards) regulation 1475 Part 1, 2 T&W 10400. Our members have over 23 years of technical and sales experience in the Fire and Safety Industry.

## MISSION:

We strive to give our Customers peace of mind, build an honest relationship, striving to deliver an honest and cost effective service to all our customers. All our staff is highly qualified and SAQCC registered to deliver the best quality of service.

That all design, installation, and servicing adhere to legal compliance, national building regulations, and SABS code of good practice. As with our customers our suppliers are highly valued and we strive to develop a trusting, honest and good practice relationship.

## VISION:

Our vision is to become the Fire and Safety specialists in the industry and to be consistent and reliable for our valuable customers.

## OUR VALUES

As a service provider of quality firefighting equipment we undertake to apply the following values:

- Take pride in ourselves and act responsibly.
- Strive for perfection in what we do.
- Gain trust through superior levels of integrity.
- Develop respectful relationships with customers and suppliers.
- Empower employees to make correct and firm decisions through constant training and to share ideas and knowledge amongst one another.

## APPROVALS AND CERTIFICATES



LICENSE  
NO. 4017





# CONTENTS

- FIRE EXTINGUISHERS
- DCP FIRE EXTINGUISHERS
- DCP FIRE EXTINGUISHERS SPARES & ACCESSORIES
- CO2 FIRE EXTINGUISHERS
- CO2 SPARES & ACCESSORIES
- EXTINGUISHING TROLLEY UNITS





## DCP & Co2 - FIRE EXTINGUISHERS

SA FIRE provides a wide range of stored pressure dry chemical powder extinguishers suitable for A, B or C class fires, or a combination of these. All extinguishers supplied, conform to the minimum fire ratings as specified in SANS 1910:2009.

Dry chemical powders have been developed over a period of thirty years. DCP can be supplied as Alpha Dynaflo, an ultra-high performance product with a SABS grade of 3A/5B, or in various grades down to Alpha Megaflo which carries a 2A/2B rating. The powders are siliconised for superior flow and anti-caking agents.

# DCP FIRE EXTINGUISHERS



1000MI

FOAM

FireStop 1000ml Foam Fire Extinguisher

**SPECIFICATIONS:**

- Extinguish minor fires. It is non-toxic, environmentally safe, and Ozone friendly.
- Charge with aqueous film-forming extinguishing and employ nitrogen as driving gas.
- Easy to operate and enjoys high fire-fighting efficiency and long term storage.



1,0KG

DCP  
FIREMATE

The 1kg extinguisher is suitable for Class A, B or C fires or combination and ideal for home use.

**SPECIFICATIONS:**

- Height: 330mm
- Diameter: 80mm
- Mass empty: 0.8kg
- Mass full: 1.8kg
- Discharge: >6sec
- Working pressure: 1400kPa
- Test pressure: 2100kPa
- Burst pressure: >5500kPa
- Safety valve: ± 2200kPa



1,5KG

DCP  
FIREMATE

The 1.5kg is the ideal extinguisher for the motor racing industry and fire protection in your motor.

**SPECIFICATIONS:**

- Height: 360mm
- Diameter: 110mm
- Mass empty: 1.3kg
- Mass full: 2.8kg
- Discharge: >6sec
- Working pressure: 1400kPa
- Test pressure: 2100kPa
- Burst pressure: >5500kPa
- Safety valve: ± 2200kPa

# DCP FIRE EXTINGUISHERS



## 2,5KG

DCP  
FIREMATE

The 2.5kg is highly effective fire extinguisher that provides rapid fire knock down. Suitable for offices and factories

### SPECIFICATIONS:

- Height: 415mm
- Diameter: 110mm
- Mass empty: 1.4kg
- Mass full: 3.9kg
- Discharge: >6sec
- Working pressure: 1400kPa
- Test pressure: 2100kPa
- Burst pressure: >5500kPa
- Safety valve: ± 2200kPa



## 4,5KG

DCP  
FIREMATE

Fitted with a high pressure discharge hose and nozzle.

### SPECIFICATIONS:

- Height: 435mm
- Diameter: 179mm
- Mass empty: 3.3kg
- Mass full: 7.8kg
- Discharge: >9sec
- Working pressure: 1400kPa
- Test pressure: 2100kPa
- Burst pressure: >5500kPa
- Safety valve: ± 2200kPa



## 9KG

DCP  
FIREMATE

Fitted with a high pressure discharge hose and nozzle.

### SPECIFICATIONS:

- Height: 545mm
- Diameter: 178mm
- Mass empty: 4.2kg
- Mass full: 13.2kg
- Discharge: >12sec
- Working pressure: 1400kPa
- Test pressure: 2100kPa
- Burst pressure: >5500kPa
- Safety valve: ± 2200kPa

# DCP SPARES & ACCESSORIES



STORED PRESSURE  
TYPE VALVE ASSEMBLY

Available in small,  
medium and large.



STORED PRESSURE  
EXTINGUISHER GAUGE

M10x1.0mm thread or  
1/8 NPT thread.



EXTINGUISHER  
PLUNGER



4,5KG & 9KG DISCHARGE  
HOSES



EXTINGUISHER SAFETY  
PIN



DISCHARGE HOSE  
NOZZLE

Available in 1kg, 1.5kg  
and 2.5kg.



FIRE EXTINGUISHER  
COVER

UV Resistant cover for  
4.5kg and 9kg  
extinguishers



J BRADCKET

Hanging wall bracket  
for 4.5kg and 9kg  
extinguishers

# CO<sup>2</sup> FIRE EXTINGUISHERS

FIRE CLASSES



SANS 1567  
APPROVED

## 2KG CO<sup>2</sup>

This 2kg alloy steel fire extinguisher is the lightest in our range designed for fires involving flammable liquids and electrical hazards.

### SPECIFICATIONS:

- Height: 585mm
- Diameter: 103mm
- Mass empty: 4.3kg
- Mass full: 6.5kg
- Effective range: 1-3m
- Discharge: >8sec
- Working pressure: 174 bar
- Test pressure: 250 bar
- Safety device: Bursting Disc 200 ± 20 bar



WSANS 1567  
APPROVED

## 5KG CO<sup>2</sup>

This 5kg alloy steel fire extinguisher is the lightest in our range designed for fires involving flammable liquids and electrical hazards.

### SPECIFICATIONS:

- Height: 770mm
- Diameter: 135mm
- Mass empty: 8.4kg
- Mass full: 14.4kg
- Effective range: 1-4m
- Discharge: >13sec
- Working pressure: 174 bar
- Test pressure: 250 bar
- Safety device: Bursting Disc 200 ± 15 bar





CO<sup>2</sup> EXTINGUISHER HEAD



CO<sup>2</sup> HOSES & HORN



BACKING BOARDS



CO<sup>2</sup> UNI BRACKET

Available in 2kg and 5kg

Available in 2kg and 5kg

Available in pine, saligna and budget pine

Available in 2kg and 5kg

## What is a CO<sup>2</sup> extinguisher used for?

They were originally designed for class B fires, (flammable liquid fires, such as oil, petrol and solvents), however, these days CO<sup>2</sup> extinguishers are mainly used for firefighting on live electrical equipment. They are often installed next to foam extinguishers in offices with computers.

## How does carbon dioxide put out a fire?

Carbon dioxide extinguishes work by displacing, or taking away the oxygen element of the fire triangle.

The carbon dioxide is also very cold as it comes out of the extinguisher, so it cools the fuel as well.

## Why is carbon dioxide used as an extinguisher?

CO<sup>2</sup> is a non-conductive and non-corrosive gas used to reduce the amount of oxygen available to the fire.

Carbon dioxide is extracted from the atmosphere and stored at high pressure in liquid state within a fire extinguisher.

# Co2 TROLLEY UNITS

The CO2 mobile fire extinguishers range makes provision for those fire risks where hand-held extinguishers would be inadequate and a fixed engineered system would not be justified. CO2 trolleys are uniquely suited to hold CO2 fire extinguishers. It provides the user with effective mobile firefighting alternatives since it can be moved around easily.



## 2x10kg CO2 TROLLEY UNIT

### SPECIFICATIONS:

- Overall Height: 1160mm
- Weight Full: 64kg
- Trolley Height: 1300mm
- Tank Capacity: 10kgx2
- Jet length: 2.5m
- Discharge time: 25s
- Test Pressure: 250bar
- Bursting Disc: 200bar +/- 15bar



## 2x10kg CO2 TROLLEY UNIT

### SPECIFICATIONS:

- Overall Height: 1160mm
- Weight Full: 31.8kg
- Trolley Height: 1300mm
- Tank Capacity: 10kg
- Jet length: 2.5m
- Discharge time: 15s
- Test Pressure: 250bar

# DCP TROLLEY UNITS

## 25kg DCP TROLLEY UNIT

This 25kg DCP unit can reach 7m when fighting a fire where access is limited. Epoxy powder coating paint prevents corrosion on the fire extinguisher trolleys and is designed to protect large industrial and marine risks. Suitable for Class A, B, C fires.

### SPECIFICATIONS:

- Height of cylinder: 795mm
- Diameter of cylinder: 250mm
- Mass empty: 14kg
- Mass full: 39kg
- Charge: 25kg
- Effective range:  $\geq 7\text{m}$
- Discharge time:  $\geq 15\text{s}$
- Discharge nozzle: Hose & Pistol
- Working pressure: 1400kPa
- Propellant: Nitrogen



## 50kg DCP TROLLEY UNIT

This 50kg DCP trolley can reach up to 9m when fighting a fire where access is limited. Suitable for Class A, B, C fires.

### SPECIFICATIONS:

- Height of cylinder: 1020mm
- Diameter of cylinder: 300mm
- Mass empty: 22kg
- Mass full: 72kg
- Charge: 50kg
- Effective range:  $\geq 9\text{m}$
- Discharge time:  $\geq 25\text{s}$
- Discharge nozzle: Hose & Pistol
- Working pressure: 1400kPa
- Propellant: Nitrogen



# FOAM TROLLEY UNITS

## 50kg FOAM TROLLEY UNIT

This 50kg foam trolley can reach up to 9m when fighting a fire where access is limited. Suitable for Class A and Class B fires.

### SPECIFICATIONS:

- Height of cylinder: 875mm
- Diameter of cylinder: 320mm
- Mass empty: 14kg
- Mass full: 39kg
- Charge: 25kg
- Effective range:  $\geq 7\text{m}$
- Discharge time:  $\geq 15\text{s}$
- Discharge nozzle: Hose & Pistol
- Working pressure: 1400kPa
- Propellant: Nitrogen



## HL120 FOAM TROLLEY UNIT

The innovatively designed HL120 Mobile Foam Unit is a fully self-contained mobile unit, which has been specifically developed for the rapid deployment of foam extinguishing agent to fires and chemical spills.

### SPECIFICATIONS:

- Weight (empty): 65kg
- Tank Capacity: 120L
- Flow rate: 4L/s
- Pressure: 0.7MPa
- Working Pressure Range: 0.6~0.8MPa
- Discharge Range:  $\geq 15\text{m}$
- Mixing Ratio: 1% - 6%
- Expansion Ratio:  $\geq 4$
- 25% Drainage Time:  $\geq 60\text{s}$



# ADDITIONAL PORTABLE EXTINGUISHERS



**9KG**

**PURPLE K  
EXTINGUISHER**

The 9kg Safequip Purple K fire extinguisher is one of the MOST EFFECTIVE DRY chemicals in fighting Class B (flammable liquid) fires - used in military facilities, oil companies and vehicles.

**SPECIFICATIONS:**

- Appearance: A fine violet colour free flowing powder
- Main ingredient: Potassium Bicarbonate 90%
- Height: 415mm
- Diameter: 110mm
- Mass empty: 1.4kg



**9L**

**WATER  
EXTINGUISHER**

Water fire extinguishers are suitable for Class A fires caused by the combustion of solid materials, mainly of organic origin, such as: wood, paper, straw, textiles, coal etc.

**SPECIFICATIONS:**

- Height: 580mm
- Diameter: 175mm
- Mass empty: 3.9Kg
- Mass full: 12.9Kg
- Discharge: >12sec
- Effective range:3-12m
- Discharge: hose & nozzle
- Working temperature:-15/+60°C
- Working pressure:1400kpa
- Test pressure:2100kpa
- Burst pressure:>5500kpa



**9L**

**FOAM  
EXTINGUISHER**

This stored pressure FOAM content extinguisher is ideal for MULTI-RISK situations where both Class A combustible materials and Class B, flammable liquid/gases, are likely to be found, or where Class B risks represent a direct hazard.

**SPECIFICATIONS:**

- Height: 580mm
- Diameter: 176mm
- Mass empty: 3.9kg
- Mass full: 12.9kg
- Effective range:3-8m
- Working pressure: 1400kPa
- Test pressure:2100kPa
- Burst pressure:>5500kPa
- Safety valve:+/- 2200kPa



# ADDITIONAL PORTABLE EXTINGUISHERS



6L

WET CHEMICAL  
EXTINGUISHER

Wet Chemical Extinguisher is designed to combat Class F fires resulting from fats and edible oils burning in deep fryers.

**SPECIFICATIONS:**

- Outside Diameter: 164mm
- Cylinder Height:430mm
- Total Height: 495mm
- Volume (L): 7.7L
- Filling ratio: 0.75
- Working Pressure: 1400kPa
- Test Pressure:3000kPa
- Minimum wall thickness: 1.6
- Charge Weight:7.6kg
- Empty Mass: 3.9kg
- Full Mass: 10.8kg



9KG

CLASS D

The most effective way to fight class D fires is with dry powder extinguishing agents because they absorb heat and smother the flames, cutting off oxygen. This Class D fire extinguisher will extinguish a fire of combustible metals safely and rapidly.

**SPECIFICATIONS:**

- Total Height: 575mm
- Diameter: 177mm
- Empty Mass: 5kg
- Full Mass: 14kg
- Discharge: >12sec
- Effective range: Lance application
- Discharge method: Hose & Lance
- Working Pressure:1400kPa
- Safety Device:+/-2200kPa



# VEHICLE BRACKETS

SA Fire vehicle brackets (single and double strap) are available for the following ranges -

**DCP RANGE:**

- 9Kg
- 4,5Kg
- 2,5Kg
- 1,5Kg

**CO<sup>2</sup> RANGE:**

- 5Kg
- 2Kg



Extra Heavy-Duty Vehicle Bracket with Round Base

Mining / Trucking



Heavy-Duty Single Strap Vehicle Bracket

CO<sub>2</sub> Range



Heavy Duty Single Strap Vehicle Bracket DCP Range

1.5kg & 2.5kg DCP



Normal Duty Single Strap Vehicle Bracket DCP Range

4.5kg and 9kg DCP



Normal Duty Double Strap Vehicle Bracket DCP Range

4.5kg and 9kg DCP



Light Duty Vehicle Bracket with Cage and Straps



Light Duty Vehicle Bracket without Cage and Straps

## VEHICLE BRACKETS

16

SA FIRE



Fire Hose Reels should not be used to wash cars, trucks or hose down drive-ways.

IT IS ONLY TO BE USED FOR FIRE FIGHTING

WORKING, TEST & MINIMUM BURST  
PRESSURE:

SANS 543:2004

**IMPORTANT NOTICE:** A fire hose reel must only be handled by people specifically trained to do so and serviced by qualified and registered SABS1475 service agent, who employs qualified SAQCC technicians.







**STAINLESS STEEL HOSEREEL**

This fire hose reel (stainless steel) is a high quality SABS certified fire hose reel which is supplied with a wall-mounting bracket, hose guide, durable nozzle and 30 meter hose.

**SPECIFICATIONS:**

- Mass without hose: 7.55kg
- Mass with hose: 18.35kg
- Disc diameter: 575mm
- Height (Bracket): 660mm
- Height (Bracket & Valve): 710mm
- Wall protection: Cabinet
- Wall projection: 250mm
- Hose: SANS 1086 PVC
- Hose dimension: ID 20mm x 30m
- Valve: 25mm BSP CP
- Length of jet: 10m @ 0.2MPa
- Discharge rate: 30l/min @300kPa



**SWING TYPE HOSE REEL**

This high quality SABS certified fire hose reel is supplied with a swing way wall-mounting bracket, a durable nozzle and 30 meter hose, facilitating the hose reel drum to be swung away from the wall.

**SPECIFICATIONS:**

- Mass without hose: 7.87kg
- Mass with hose: 19.4kg
- Disc diameter: 575mm
- Height (Bracket): 575mm
- Wall protection: Cabinet
- Wall projection: 290mm
- Hose: SANS 1086 PVC
- Hose dimension: ID 20mm x 30m
- Valve: 25mm BSP CP
- Length of jet: 10m @ 0.2MPa
- Discharge rate: 30l/min @300kPa



**SWING TYPE HOSE REEL**

This high quality SABS certified fire hose reel is supplied with a swing way wall-mounting bracket, a durable nozzle and 30 meter hose, facilitating the hose reel drum to be swung away from the wall.

**SPECIFICATIONS:**

- Mass without hose: 7.87kg
- Mass with hose: 19.4kg
- Disc diameter: 575mm
- Height (Bracket): 575mm
- Wall protection: Cabinet
- Wall projection: 290mm
- Hose: SANS 1086 PVC
- Hose dimension: ID 20mm x 30m
- Valve: 25mm BSP CP
- Length of jet: 10m @ 0.2MPa
- Discharge rate: 30l/min @300kPa

# HOSEREEL SPARES



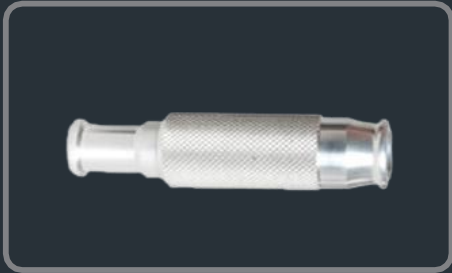
Hose Reel Cover - UV Resistant



Hose Reel CP Valve



Plastic Hose Reel Nozzle Red



Aluminium Nozzle



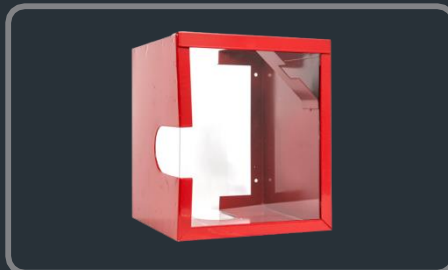
Hose Reel Shackle



Hose Reel Waterway



PVC Hose 30m - SANS 1086 Approved



CP Valve Cover



Clamps



## LAYFLAT HOSES & COUPLINGS

19

SA FIRE

### LAY FLAT HOSES & COUPLINGS

SA Fire provides a wide range of high-pressure lay flat fire hoses. We offer flexible braided or woven hose options (available as unlined, lined or double lined) to transport water or other fire retardants (e.g. foam) to a fire when extinguishing it.

These hoses are generally found in standard 30m lengths fitted with instantaneous male and female couplings.

A range of hoses is available, each designed for different applications and varying in quality and strength.

An economical fire hose is used for once-off emergencies, whereas more expensive durable hoses are used regularly by in-house fire teams and fire departments.

# LAYFLAT HOSES



**FORTEX FIRE HOSE**

The Fortex fire hose is an all-purpose Nitrile Rubber Fire Hose. It is a multi-purpose hose for many industries and can be used for liquid transfer of chemicals, hydrocarbons and gasoline in all agricultural and irrigation applications.

The Fortex hose is easy to use in all climatic conditions with no drying required and is extremely durable.



**MAMBA FIRE HOSE**

The Mamba Fire Hose is a non-percolating uncoated box hose with a robust polyester jacket, rot-free and resistant to weathering and aging.

The synthetic fibers in the hose jacket does not degrade over time.

The Mamba fire hose is light, very flexible and easy to handle.



**VALUE RANGE FIRE HOSE**

These hoses are useful for water pumping applications in a various industries:

- Agriculture
- Construction
- Mining
- Waste water

These PVC hoses are available in single and double-lined options.



**TYPE-3 FIRE HOSE**

The Type-3 Fire Hose is a premium high quality product used by industrial and municipal fire fighters around the world in the most demanding situations.

## FORTEX FIRE HOSE

### BENEFITS & FEATURES

- Synthetic reinforced jacket for long life.
- Inner and outer coating of high abrasion resistant Nitrile Rubber.
- Easy to use in all climatic conditions.
- No drying required.
- Extremely durable.
- Resistant to oil and chemicals.
- Easy to clean.
- Rolls up easily.
- Long life expectancy.
- Unaffected by weather and mildew.
- Lightweight and quickly action ready.

## MAMBA FIRE HOSE

### BENEFITS & FEATURES

- Rot proof: These hoses are rot proof and does not have to be dried after use.
- Increased resistance to weathering and ageing: The synthetic fibers in the hose jacket does not degrade.
- Light & flexible: Coil diameter has been reduced for easy handling. The hoses are therefore light and flexible.

## VALUE RANGE FIRE HOSE

These hoses are useful for water pumping applications in a various industries:

- Agriculture
- Construction
- Mining
- Waste water

These PVC hoses are available in single and double-lined options.

## TYPE-3 FIRE HOSE

### BENEFITS & FEATURES

The Type-3 Fire Hose is a premium high quality product used by industrial and municipal fire fighters around the world in the most demanding situations.

- Internal rubber lining closely woven with polyester fibre.
- Wrap made from multiply high tenacity fibres.
- Synthetic rubber compound specially formulated for abrasion and flexibility.
- Chemical resistance and protection against aging.
- Smooth inner lining surface with very low friction loss.
- High performance quality.

## FORTEX FIRE HOSE

### BENEFITS & FEATURES

Inside Diameter	Weight	Bursting Pressure kPa	Operating Pressure kPa
38mm	300g/m	4600	2000
44mm	360g/m	4500	1700
64mm	570g/m	4200	1700

## MAMBA FIRE HOSE

### BENEFITS & FEATURES

Inside Diameter	Coil Diameter per 30m length (mm)	Weight (g/m)	Short Length Burst Pressure (kPa)	Operating Pressure (kPa)
38mm	380	170	3500	1700
44mm	380	188	3500	1700
50mm	400	210	3500	1700
64mm	400	250	3500	1700

## VALUE RANGE FIRE HOSE

Type	Coil Diameter per 30m length	Weight without couplings	Short length bursting (kPa)	Operating Pressure (kPa)
Material outside: Polyester Yarn Coating inside: Black NBR				
White	65mm	±14.4kg	3900	1300
	65mm	±12.6kg	2400	800
	50mm	±11.4kg	3900	1300
	50mm	±9.6kg	2400	800
	40mm	±8.4kg	3900	1300
	40mm	±7.2kg	2400	800
Material outside: PVC Coating inside: PVC				
Red	65mm	±14.85kg		800
	50mm	±12.6kg		800
	40mm	±9.6kg		800
Material outside: PVC Coating inside: PVC				
Yellow	65mm	±11.7kg		1200

## TYPE-3 FIRE HOSE

### APPROVALS

- UL19 - Lines fire hose and hose assemblies.
- Kitemark BS6391:2009 Type III
- Solas 74 Directive - Mark Med for marine equipment

# LAYFLAT HOSES



**DURAFLEX FIRE HOSE**

The Duraflex Progress Hose is the number one hose for fire-fighters worldwide, proven to be tough, durable, and resistant against abrasion, oil, fuel and a wide range of chemicals. The Duraflex hose is resistant to heat, UV and ozone and has very low friction loss with low elongation. The great advantage is that it is so easy to repair.



**COBRA FIRE HOSE**

The Cobra Fire Hose is a non-percolating hose with a robust, all-synthetic jacket. It is ideal for situations where water damage must be avoided, or where foam-making equipment is in use. Excellent benefits and cost saving features. Cobra hoses are rot proof, and do not need to be dried after use.



**FIRECHECK FIRE HOSE**

Firecheck fire hose is a non-percolating hose with a robust, all-synthetic jacket. It is designed for use by fire brigades and industry. The coating allows the hose to be simply wiped clean after use and enhances abrasion resistance and increase the life of the hose.



**TYPE-3 FIRE HOSE**

The Forester Fire Hose is a percolating hose with a robust, all-synthetic jacket. It is suitable for forest and field fires with the outer coating remaining wet during use. These hoses are rot proof, and need not be dried after use. The synthetic fibers in the hose jacket are resistant to the effects of ultra violet rays.

# LAYFLAT HOSES



DURAFLEX FIRE HOSE

The Duraflex Progress Hose is the number one hose for fire-fighters worldwide, proven to be tough, durable, and resistant against abrasion, oil, fuel and a wide range of chemicals. The Duraflex hose is resistant to heat, UV and ozone and has very low friction loss with low elongation. The great advantage is that it is so easy to repair. Working pressure is 16bar.



COBRA FIRE HOSE

The synthetic fibers in the hose jacket are resistant to the effects of ultra violet rays and is weather resistant. The coil diameter has been reduced for easy handling and the hoses are therefore light and flexible.



VALUE RANGE FIRE HOSE

The PVC/Nitrile coating gives improved protection against oil and chemical contamination and has increased resistance to chemicals and oils. The new generation Firecheck is lighter, and has a smaller coil diameter than the conventional latex lined hose. Available in long lengths on request. Blue Firecheck available for wash-down purposes.



FORESTER FIRE HOSE

The hose is very light & flexible due to the coil diameter that has been reduced for easy handling.





BS 6391 / Type 3,  
DIN14811, NFPA1961

### BENEFITS & FEATURES

- Tough, durable and abrasion resistant.
- Resistance to oil, fuel and a wide range of chemicals.
- Resistance to heat, UV and ozone.
- Very low friction loss and low elongation.
- No cleaning / drying required.
- Easy to repair.



Manufactured in accordance  
with SANS 1456 Part 5

### BENEFITS & FEATURES

- Rot proof: These hoses are rot proof, and need not be dried after use.
- Weather resistant: The synthetic fibers in the hose jacket are resistant to the effects of ultra violet rays.
- Light & flexible.



Manufactured in accordance  
with SANS 1456 Part 5

### BENEFITS & FEATURES

- Simply wipe clean after use.
- Easy to repair.
- Abrasion resistance.
- Increased resistance to chemicals and oils.
- Light & flexible.



Manufactured in accordance  
with SANS 1456 Part 5

### BENEFITS & FEATURES

- Rot proof: These hoses are rot proof, and need not be dried after use.
- Weather resistant: The synthetic fibers in the hose jacket are resistant to the effects of ultra violet rays.
- Light & flexible: Coil diameter has been reduced for easy handling.

# LAYFLAT HOSES



Inside Diameter	Cobra Fire Hose				Firecheck Fire Hose				Forester Fire Hose			
	Coil Diameter per 30m length	Weight	Short length bursting kPa	Operating Pressure kPa	Coil Diameter per 30m length	Weight	Burst Pressure kPa	Operating Pressure kPa	Coil Diameter per 30m length	Weight	Short length bursting kPa	Operating Pressure kPa
38mm	380mm	180g/m	4800	1200	410mm	270g/m	5000	2000	380mm	180g/m	3500	1200
44mm	380mm	190g/m	4500	1800	410mm	340g/m	4800	1500	380mm	210g/m	3250	1200
50mm	580mm	210g/m	4500	1800	415mm	350g/m	4800	1500	380mm	230g/m	3000	1200
64mm	400mm	265g/m	4250	1500	420mm	460g/m	4500	1500	400mm	290g/m	3000	1000
76mm	410mm	310g/m	3750	1200	425mm	560g/m	4000	1200	410mm	350g/m	2500	1000
102mm	420mm	420g/m	3600	1200	450mm	715g/m	3800	1200				

**APPLICATION:**

- Refineries.
- Chemical industry.
- Military.
- Fire brigades.
- Marine and offshore installations.

**SPECIFICATIONS:**

Inside diameter: 64mm  
 Weight: 470g/m  
 Wall thickness: 2.2mm  
 Working Pressure: 1600kPa  
 Proof Pressure: 3200kPa  
 Bursting Pressure: 5000kPa

# COUPLINGS & ADAPTORS



NAKAJIMA COUPLING

This hermaphrodite connection system has two interlocking connecting lugs for fire hose connections.

Nominal Size: 65mm  
Hose Tail Size: 65mm  
Weight: 1.1kg

Nominal Size: 65mm  
Hose Tail Size: 50mm  
Weight: 1kg

Nominal Size: 65mm  
Hose Tail Size: 38mm  
Weight: 0.9kg



INSTANTANEOUS BRASS  
COUPLING

This non-symmetrical quick connection coupling with a male and female part connects to hoses. It is used only in delivery operations.

Nominal Size: 65mm  
Hose Tail Size: 65mm  
Weight: 2,8kg

Nominal Size: 65mm  
Hose Tail Size: 50mm  
Weight: 2,8kg

Nominal Size: 65mm  
Hose Tail Size: 44mm  
Weight: 2,8kg

Nominal Size: 65mm  
Hose Tail Size: 38mm  
Weight: 2,75kg



INSTANTANEOUS (ALUMINUM)  
COUPLING

This non-symmetrical quick connection coupling with a male and female part connects to hoses. It is used only in delivery operations.

Nominal Size: 65mm  
Hose Tail Size: 65mm  
Weight: 0,98kg

Nominal Size: 65mm  
Hose Tail Size: 50mm  
Weight: 0,96kg

Nominal Size: 65mm  
Hose Tail Size: 44mm  
Weight: 1kg

Nominal Size: 65mm  
Hose Tail Size: 38mm  
Weight: 0,95kg

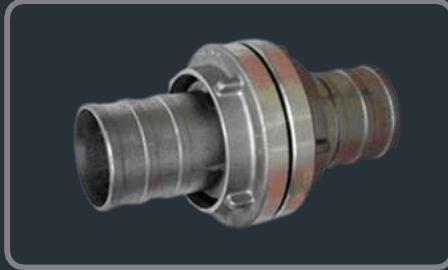


GEKA WATER COUPLING

Geka fittings are a great alternative to Hozelock style hose connectors.

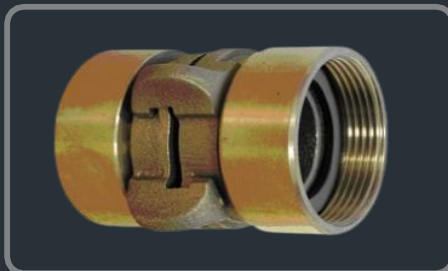
SIZES:

- 1/2" Hose Tail
- 3/8" Hose Tail
- 3/4" Hose Tail
- 1" Hose Tail
- (Female) 3/4"
- (Male) 3/4"



STORZ COUPLING

When connecting two fire hydrants with different hose ends, Storz couplings provide a quick and easy solution. Storz is a quarter turn coupling, no male and female parts, with lugs on the inside of the coupling.



NAKAJIMA ADAPTOR

This is a type of hermaphrodite connection system with two interlocking connecting lugs.

Continue – Page.29



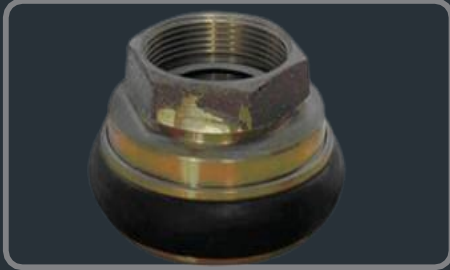
MACHINO COUPLING

The Machino is a quick connect-and-disconnect coupling used on fire hoses.

SIZES:

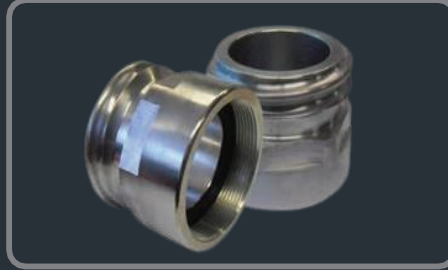
- Machino 1 (38) 1/2 x 38mm Hose Tail 44.7 x 45.0
- Machino 2 (63) 1/2 x 63mm Hose Tail 68.4 x 71.4

# COUPLINGS & ADAPTORS



MACHINO ADAPTOR

Equipped with a male and female fitting, the instantaneous adapter is non symmetrical and helps fire-fighters to connect hoses quickly.



INSTANTANEOUS ADAPTOR

A non-symmetrical quick connection coupling with a male and female part. These couplings are only suitable for delivery operation. For suction operation round thread couplings are in use.



STORZ ADAPTOR

Mainly used for connecting fire hydrants; Storz is a quarter turn adapter that is easy to connect with no particular male or female parts.



## EXTINGUISHING AGENTS

SA Fire is a supplier of extinguishing agents such as foam and powders that can be found in solid, liquid or gaseous forms. When combined with fire suppression systems or fire sprinkler systems, they are highly effective in putting out fires.

Our extinguishing agents are from a local producer of world class SABS approved quality firefighting powders.



## DRY CHEMICAL POWDER CLASS ABC

### SABS APPROVED (SANS1910)

Dry Chemical Powder (Class ABC) is mono ammonium phosphate-based powders that are generally for multi-purpose use on Class A, B and C fires. These dry chemical powders comes in 40% and 90%.

### USE:

#### Class A Fires -

It insulates Class-A fires by melting at approximately 350–400°F.

#### Class B Fires -

It insulates Class-A fires by melting at approximately 350–400°F.

#### Class A fires -

It insulates Class-A fires by melting at approximately 350–400°F.



## DRY CHEMICAL POWDER CLASS D

Certain metals are extremely combustible and must be used with caution and the appropriate safety measures.

### THESE METALS INCLUDE:

- Magnesium
- Potassium
- Sodium Titanium
- Alkylolithiums
- Grignards and
- Diethylzinc

These chemicals react violently with water, air and other chemicals and cause Class D fires, which burn at high temperatures.

As such, typical fire extinguishers are not sufficient for this type of fire; labs working with combustible metals must have a type D extinguisher available.



## SAFEQUIP PURPLE “K”

Purple K is one of the most effective dry chemicals in fighting Class B (flammable liquid) fires and manufactured in-house by Safequip.

Purple K (90% Potassium Bicarbonate) is a Class BC powder and is available for use in areas such as airfields, chemical plants and refineries where superior fire extinguishing qualities are required.

Purple K is the MOST EFFECTIVE DRY chemical in fighting CLASS B (flammable liquid) fires.

### APPEARANCE:

A fine violet colour free flowing powder.

### APPEARANCE:

Potassium Bicarbonate 90%



## DRY CHEMICAL POWDER CLASS BC

Dry Chemical Powder is divided into a ABC Class and a BC Class . This dry chemical powder BC Class consists of the Safequip Purple K and the Soda Bic.

### SODA BIC TYPES:

Available On Request -

- Beta Easy Flo 20%
- Beta Super Flo 90%
- Beta Hyper Flo 40%

**Protein Foams** are bio-degradable. They flow and spread slower than synthetic foam, but provide a heat resistant foam blanket and are more durable.

## FOAM

Foam is an aerated solution which is used for fire prevention and firefighting. Foam concentrate is the full strength liquid which is diluted and processed to produce foam. The foam solution is the mixture produced by diluting foam concentrate with water before processing to make foam.

**Class A** foams are mostly used to fight wild fires. They assist in the wetting and saturation of Class A fuels with water, which aids fire suppression and can prevent re-ignition.

**Class B** foams are best suited for putting out fires that involve flammable liquids.

**Synthetic Foams** provide better flow and faster knockdown of flames, but offer limited post-fire security.

## WET CHEMICAL

Wet Chemical is specifically designed to combat fires resulting from fats and edible oils burning in deep fryers.

This wet chemical extinguisher reacts with hot, burning cooking oil or fat. When the fire extinguishing substance is applied to the burning liquid it will cool and emulsify the oil, and the flames will immediately subside. An effective fire extinguishing film of foam forms on the surface which prevents re-ignition.

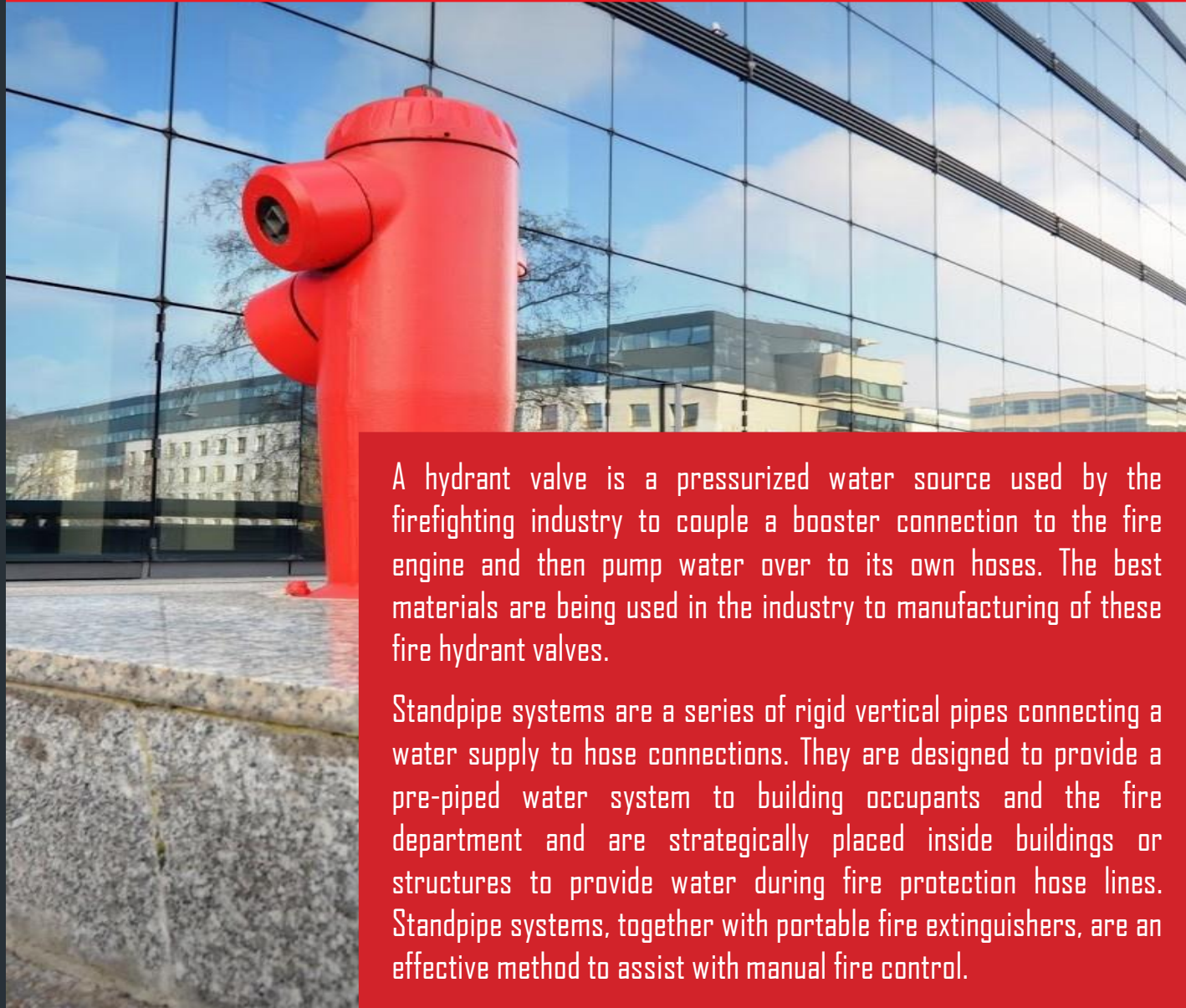
The wet chemical agent is a special salt based fire extinguishing liquid used in fire extinguishers or stationary fire extinguishing installations for fighting fires in deep fat fryers, frying appliances as well as air exhaust facilities in kitchens.



## FIRE HYDRANT VALVES AND STAND PIPES

33

SA FIRE



A hydrant valve is a pressurized water source used by the firefighting industry to couple a booster connection to the fire engine and then pump water over to its own hoses. The best materials are being used in the industry to manufacturing of these fire hydrant valves.

Standpipe systems are a series of rigid vertical pipes connecting a water supply to hose connections. They are designed to provide a pre-piped water system to building occupants and the fire department and are strategically placed inside buildings or structures to provide water during fire protection hose lines. Standpipe systems, together with portable fire extinguishers, are an effective method to assist with manual fire control.

# FIRE HYDRANT VALVES



50mm Marine  
HYDRANT VALVE

**SPECIFICATIONS:**

Opening Mechanism: Hand wheel  
Height: 155mm  
Weight: 1.5kg  
Working Pressure: 16 bar  
Material: Brass, upward oblique



80mm Right Angle BRASS  
HYDRANT VALVE

**SPECIFICATIONS:**

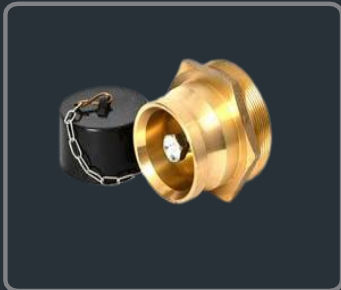
Opening Mechanism: Hand wheel  
Height: 424mm  
Weight: 7.42kg  
Working Pressure: 16 bar  
Material: Brass



80mm Right Angle BRASS  
HYDRANT VALVE

**SPECIFICATIONS:**

Opening mechanism: Taper proof key  
Height: 474mm  
Weight: 4.22kg  
Working pressure: 16 bar  
Material: Brass



## BOOSTER CONNECTOR

**SPECIFICATIONS:**

This is a high quality product manufactured entirely from intrinsic corrosion-resistant materials and utilises 'O'-Ring technology to ensure durable leak-proof and trouble-free operation.

# FIRE HYDRANT VALVES



80mm Oblique BRASS HYDRANT VALVE

**SPECIFICATIONS:**

Opening Mechanism: Hand wheel  
Height: 242mm  
Weight: 5.4kg  
Working Pressure: 16 bar  
Material: Brass



80mm Right Angle CAST IRON HYDRANT VALVE & ADAPTER

**SPECIFICATIONS:**

2½" BSP with 65mm Female Instantaneous Adapter  
Opening Mechanism: Hand wheel  
Height: 250mm  
Weight - Valve: 4.1kg  
Weight - Adapter: 0.56kg  
Working pressure: 16 bar  
Material: Cast iron



DOUBLE BOOSTER CONNECTOR

**SPECIFICATIONS:**

Inlet: 2 x 65mm male instantaneous coupling to BS 366, non-return valve, blanking caps and chain  
Booster: Copper alloy parts stainless steel valve shaft and spring. Compact design with excellent flow characteristics.  
Siamese Body: Copper 58-3  
Rated Capacity: 1920ℓ/min  
Test Pressure: 2000kPa  
Working pressure: 1200 kPa  
Leak tested: 800 kPa

## SPECIFICATIONS:

- Rated Capacity: 1920ℓ/min
  - Test Pressure: 2000kPa
  - Working Pressure: 1200 kPa Leak tested: 800 kPa
- 
- 850 LVT Standpipe Light Aluminium Fixed Head
  - 850 LRT Standpipe Light Aluminium Fixed Head
  - 1.2 LVT Standpipe Light Aluminium Fixed Head
  - 1.2 LRT Standpipe Light Aluminium Swivel Head
  - 1.5 LVT Standpipe Light Aluminium Fixed Head
  - 1.5 LRT Standpipe Light Aluminium Fixed Head
  - 1.5M LVT Standpipe Light Aluminium Swivel Head
  - 1.5M LRT Standpipe Light Aluminium Swivel Head





# MISCELLANEOUS FIRE PROTECTION EQUIPMENT



**Extra Light SABS (SANS 1091)** approved, with battery backup. Complete light with 2 bulbs.



**Fire Blankets**  
Sizes: 0.9m x 0.9m | 1m x 1m | 1.2m x 1.2m | 1.2m x 1.8m | 1.8m x 1.8m



**Smoke Alarm Tester**  
Smoke tester for the smoke alarm.



**Smoke Alarm**  
Photoelectric smoke alarms detects smouldering fires before they burst into flames.



**First Aid Kit Bag**



**Plastic First Aid Kit**



**Metal First Aid Kit**



**First Aid Kit Content**

First Aid Kit Content List: Wound cleaner / antiseptic (100ml) · Swabs for cleaning wounds · Cotton wool for padding (100g) · Sterile gauze (minimum quantity: 10) · 1 pair of forceps (for splinters) · 1 pair of scissors (minimum size 100mm) · 1 set of safety pins · 4 triangular bandages · 4 roller bandages (75mm x 5m) · 4 roller bandages (100mm x 5m) · 1 roll of elastic adhesive (25mm x 3m) · 1 non-allergenic adhesive strip (25mm x 3m) · 1 packet of adhesive dressing strips (minimum quantity 10 assorted sizes) · 4 first aid dressing (75mm x 100mm) · 4 first aid dressings (150mm x 200mm) · 2 straight splints · 2 pairs large and 2 pairs medium disposable latex gloves a · 2 CPR mouth pieces or similar devices.





Plastic Bucket with Lid



Metal Fire Bucket 10l



Metal Key Box



Air Horn 135ml c/w Metal Case Wall Mounted



Air Horn 135ml



Collecting Breech



Redlam Panic Bolt



Plastic Key Box



## FIRE CABINETS

SA FIRE



**EXTREMELY**

**STRONG &  
DURABLE**

Made from LLDPE - a flexible polyethylene with high impact strength. Fused into the plastic during the moulding process moul- in-graphics will not peel or rub off and will last the lifetime of the product. These fire cabinets are light-weight and have the following features:

Good rigidity | Excellent impact strength | Excellent chemical resistance | Good ESCR | Heat and UV resistant | Tough and abrasion-resistant | Metallocene copolymer.

# FIRE CABINETS



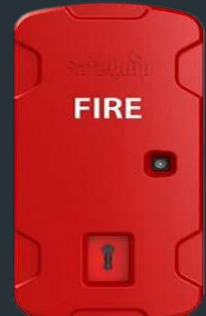
**9kg Truck Cabinet**  
Height: 625mm - Width: 246mm  
Depth: 271mm - Weight: 3.38kg



**9kg Cabinet**  
Height: 700mm - Depth: 250mm  
Width: 330mm - Material: Plastic



**2x 9Kg Cabinet**  
Height: 730mm - Depth: 265mm  
Width: 520mm - Material: Plastic



**4.5kg Cabinet**  
Height: 550mm - Depth: 252mm  
Width: 330mm - Material: Plastic



**Hose Reel Cabinet**  
Height: 970mm - Width: 730mm  
Depth: 290mm - Material: Plastic



**Marine Cabinet**  
Height: 970mm - Width: 730mm  
Depth: 290mm - Material: Plastic

STEEL



**4.5kg Single Extinguisher Cabinet**  
**4.5kg Double Extinguisher Cabinet**

STEEL



**9kg Single Extinguisher Cabinet**  
**9kg Double Extinguisher Cabinet**



## AWG EQUIPMENT

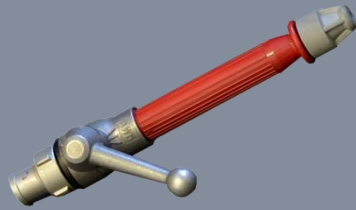
We offer an extensive product range of branch pipes, nozzles, foam making equipment, monitors and other specialized firefighting products.

AWG is known for their quality and is Europe's leading manufacturer of professional firefighting equipment.

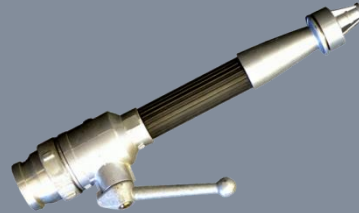
# AWG EQUIPMENT



TURBO NOZZLE



MINI JET SPRAY



C1 JET SPRAY CURTAIN

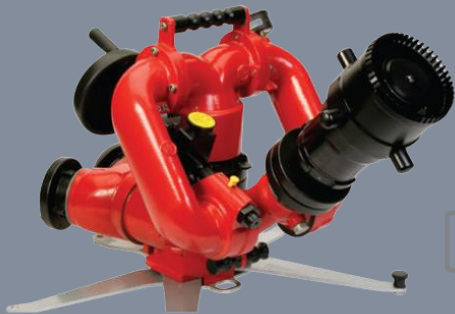


HS20 UNIVERSAL NOZZLE



FOAM MAKING EQUIPMENT





AWG APF 3-P



AWG TURBO  
FIREFIGHTER



## DIVIDING EQUIPMENT



2 WAY BALL VALVE  
DIVIDER



3 WAY BALL VALVE  
DIVIDER



2 WAY CONTROLLED  
DIVIDER SCREW DOWN



SIAMESE 3 WAY  
COLLECTING BREACH

A close-up photograph of a firefighter in full protective gear, including a helmet and a jacket with reflective yellow stripes. The firefighter is holding a black fire hose with a nozzle, which is spraying a powerful stream of water. The background is a blurred, light-colored wall, possibly made of brick or concrete. The image is overlaid with a red banner at the top and a red box at the bottom containing text.

## SA FIRE NOZZLE RANGE

SA FIRE

SA Fire offers an extensive product range of branch pipes, nozzles, foam making equipment, monitors and other specialised firefighting products.

## PISTOL GRIP DISCHARGE HOSE NOZZLE N/P

- Durable handle design for quick open/close operation
- Stainless filter mesh prevents blockage caused by debris
- Various inlet options; BIC 65mm / Storz
- Reinforced metal piece improves durability
- Enhanced positivity of flow selection
- Laser-etched anodized label for excellent durability and visibility
- 120° turn from jet to fog
- Stainless steel spinning teeth
- Flow pattern detents facilitate positive positioning and smooth action



## PISTOL GRIP HOSE REEL LINE NOZZLE

- Durable handle design for quick open/close operation
- Stainless filter mesh prevents blockage caused by debris
- Various inlet options; 25mm BSP inlet: Brass Geka / Storz
- Ergonomic design pistol grip
- Reinforced metal piece improves durability
- Enhanced positivity of flow selection
- Stainless steel spinning teeth
- Laser-etched anodized label for excellent durability and visibility
- Flow pattern detents facilitate positive positioning & smooth action

## MULTI-PURPOSE NOZZLE WITH PISTOL GRIP (Sliding Valve)

Offering a flow range of 30 to 150gpm (115-230-360-475-570 LPM) at either 75psi (5 Bar) or 100psi operating pressures, These Nozzles are available with selectable gallonage or automatic flow and pressure control. One piece nozzles include an integral slide valve for flow control and offers a stainless steel spinning, tooth pattern design.

### Features

- Slide valve. Pistol Grip Nozzles.
- One-piece nozzle design with integrated slide valve provides turbulence-free flow control and five detent flow positions.
- Slide valve design delivers adjustable flow rates via the handle.
- Flow pattern detents facilitate positive positioning and smooth action for specific flow control.
- Flush without nozzle shutdown or pattern adjustment.
- An integral tactile indicator provides optional pre-set pattern selection.
- Large index ring with indicator allows easy flow or flush selections - even with a gloved hand.
- Bonded rubber bumper provides maximum durability in harsh conditions.
- Lightweight hard anodized aluminium allows the body to include permanent operational markings and highly visible reflective labelling.
- Includes the pistol grip.
- Performance as per NFPA-1964, Standard for Spray Nozzles and appliances.





# NOZZLE FLOW SETTING CHART

## NOZZLE FLOW SETTING CHART

PRODUCT NUMBER	MATERIAL	SIZE	FLOW SETTINGS (LPM)
SS201	Aluminium	1" (25mm)	Selectable 19-37-90-150@7bar
SS202	Aluminium	1" (25mm)	Selectable 50-100-150-230@7bar
SS401	Aluminium	1.5" (38mm)	Selectable 114-227-360-475-568@7bar
SS402	Aluminium	1.5" (38mm)	Selectable 114-227-360-475-568@7bar
SS601	Aluminium	2.5" (65mm)	Selectable 114-227-360-475-568-757@7bar
SS603	Aluminium	2.5" (65mm)	Selectable 360-475-568-757-946@7bar
SS701	Aluminium	2.5" (65mm)	Selectable 750-950-1135-1300@7bar

# PROTEK RANGE NOZZLE

## SELECTABLE (ADJUSTABLE) GALLONAGE HANDLINE NOZZLE

Adjustable gallonage nozzles allow the nozzle operator to manually select a desired gallonage without shutting down. Like the single gallonage nozzle, some of today's adjustable gallonage nozzles can provide quality patterns even at reduced nozzle pressures.

### Features

- Material: Aluminium or Brass.
- 120° turn from jet to fog pattern. Meets NFPA 1964.
- Protek Series nozzles are selectable gallonage nozzles. Standard 7 Bar operation pressure, optional 5 Bar.
- Flush without shutting down, nozzle standard with stainless steel ball valve type shutoff, for smooth action and long-life operation.
- Combination pattern nozzles with versatile multiple flow settings.
- Handline nozzles with 25mm inlet with BSP swivel, can be used for high-pressure applications up to 40 Bar hydrostatic pressure.
- Normal-pressure nozzles up to 7 Bar operating pressure come with standard British Instantaneous (BI) male inlet coupler, 65mm.
- All the products are tested before being packaged for shipment.



# AGRICULTURAL FIRE EQUIPMENT AND PUMPS

SA FIRE

## AGRICULTURAL FIRE EQUIPMENT AND PUMPS

We have broad a selection of veld firefighting equipment. SA Fire specialises in manufacturing skid units and offers a variety of products to suit every client's individual needs.



# MOBILE SKID UNITS



## 700L FIBRE GLASS TANK TWIN IMPELLER

MODEL	DESCRIPTION	PUMP	PUMP FLOW RATE	TOTAL HEAD BAR	ENGINE	ENGINE CAPACITY	TANK CAPACITY
Twin Impeller Skid Unit	The Twin Impeller Skid Unit includes a 60M delivery hose and a 5m suction hose assembly that is ideal for high volume application. The unit includes quick coupling on suction.	Davey 5/8" Twin Stage Fire Fighter	400lpm	10Bar	Honda GX160	5,5Hp	700L Fibre Glass Tank

BAFFLE PLATES	SUCTION DIAMETER	HOSE OUTLETS	HOSE LENGTH	HOSE TYPE	SPRAY REACH	APPLICATION	PISTOL NOZZLE
YES	5M/40MM	3 Hose Outlet – Hose Reel Included	60M	Drag Line SABS 10Bar	<=20M	Able to switch between applications while engine is running.	German deigned AWG mini jet/spray nozzle.

# MOBILE SKID UNITS



## 650L PLASTIC STEP TANK SINGLE IMPELLER

MODEL	DESCRIPTION	PUMP	PUMP FLOW RATE	TOTAL HEAD BAR	ENGINE	ENGINE CAPACITY	TANK CAPACITY
Single Impeller Skid Unit	The Single Impeller Skid Unit is a dependable water solution for fire protection and water transfer with a 30m delivery hose. Best suited for a medium volume application.	Davey 5/8" Single Stage Fire Fighter	500lpm	7 Bar	Honda GX160	5,5Hp	650L Plastic Step Tank

BAFFLE PLATES	SUCTION DIAMETER	HOSE OUTLETS	HOSE LENGTH	HOSE TYPE	SPRAY REACH	APPLICATION	PISTOL NOZZLE
N/A	5M/40MM	3 Hose Outlet – Hose Reel Included	30M	Drag Line SABS 10Bar	<=20M	Able to switch between applications while engine is running.	German deigned AWG mini jet/spray nozzle.

# MOBILE SKID UNITS



## 500L PLASTIC T-STYLE TANK HIGH PRESSURE

MODEL	DESCRIPTION	PUMP	PUMP FLOW RATE	TOTAL HEAD BAR	ENGINE	ENGINE CAPACITY	TANK CAPACITY
Economy Skid Unit – High Pressure	The High Pressure Economy Skid Unit weighs and has an automatic unloader valve that regulates pressure.	Ruby TR-22AG	17-20lpm	35 Bar	Honda GX160	5,5Hp	500L Plastic T-Style Tank

BAFFLE PLATES	SUCTION DIAMETER	HOSE OUTLETS	HOSE LENGTH	HOSE TYPE	SPRAY REACH	APPLICATION	PISTOL NOZZLE
N/A	N/A	2 Hose outlet	10M	Hydraulic Hose	<=7M	Pump can run dry without damaging seals	High pressure trigger Gun

# MOBILE SKID UNITS



## 500L PLASTIC T-STYLE TANK LOW PRESSURE

MODEL	DESCRIPTION	PUMP	PUMP FLOW RATE	TOTAL HEAD BAR	ENGINE	ENGINE CAPACITY	TANK CAPACITY
Economy Skid Unit – Low Pressure	The Low Pressure Economy Skid Unit has a suction hose and strainer of 5 meters with an excellent spray reach of 18 meters.	ZB50	416lpm	2.5 Bar	Akira	5,5Hp	500L Plastic T-Style Tank

BAFFLE PLATES	SUCTION DIAMETER	HOSE OUTLETS	HOSE LENGTH	HOSE TYPE	SPRAY REACH	APPLICATION	PISTOL NOZZLE
N/A	5M/40MM	1 Hose outlet	10M	Drag Line SABS 10Bar	<=18M	Able to switch between applications while engine is running.	Chinese mini jet/spray nozzle.

# AGRI EQUIPMENT



DRIP TORCH



PLASTIC DRIP TORCH

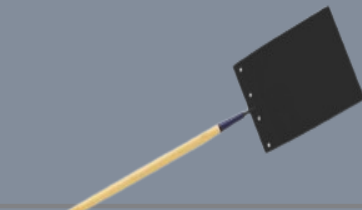
COLAPSIBLE NAPSACK



NAPSACK COMPLETE



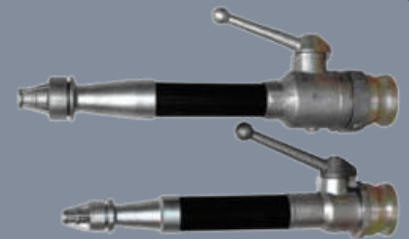
RAKE HOE – HANDLE INCLUDED



FIRE BEATER  
ALSO AVAILABLE IN ALUMINIUM



FORESTER FIRE HOSE



VALUE RANGE



087 654 4339 (Office)  
www.safiresupplies.co.za

57

SA FIRE



WE SERVE WITH PRIDE